

User manual

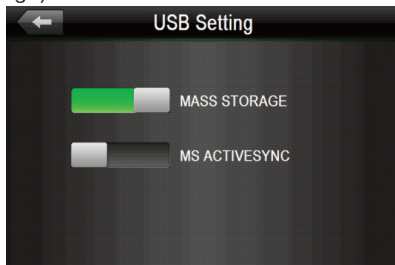
Navitel Navigator Update Center



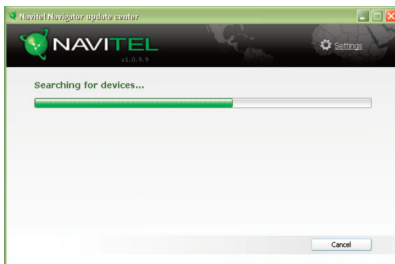
The Join Stock Company "CNT", 2007. All rights reserved.

The contents of this Guide, as well as any attached demo materials, are the sole proprietorship of the Join Stock Company "CNT". Any commercial usage of this Guide may be carried out only with written permission from the Join Stock Company "CNT". The information in this document shall not be changed without prior notice given to the Join Stock Company "CNT".

-
1. Download Navitel Navigator Updater from the “Downloads” section of the official NAVITEL® website to your PC and install it using the Windows installation wizard.
 2. Connect the portable navigation device to the PC in the external storage mode (USB Flash Drive / Mass Storage).



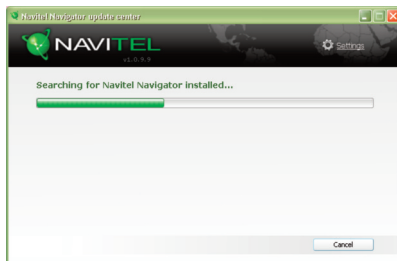
3. Run the Navitel Navigator Update Center. The software might check for newer versions of the Navitel Navigator Update Center available.
4. The software will start a device searching process.



5. If the device has been properly connected, the software will detect it. Select the device and press “Next”.



6. The software will search for the installed Navitel Navigator and for available updates.

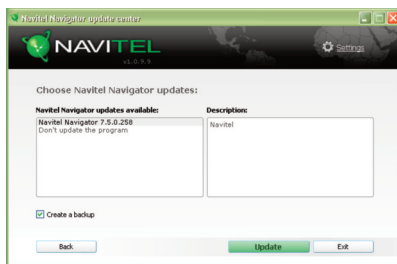


7. If a newer version has been found the Navitel Navigator Update Center will suggest updating the PND to the latest available software version. Press “Next” to continue.

Attention: If the Navitel Navigator Update Center software hasn't found the Navitel Navigator executable file the path to the file can be set manually using the “Select” button near the file path field.



8. Select the Navitel Navigator software update version. In case only map update is required select “Do not update the program”. It is however recommended that the program be updated to avoid problems of compatibility with the newest versions of maps. Press “Update”.



9. After you have selected the software version, the Navitel Navigator Update Center will suggest map updating. If your PND has an additional storage slot, it will be necessary to determine the storage to install the new maps.

10. Select the maps for updating or downloading and press “Update”.



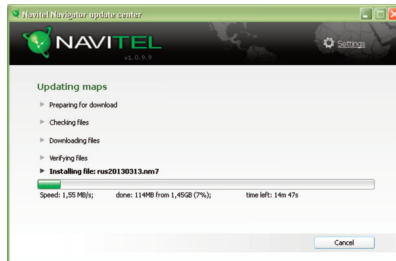
11. Note that files of the older map versions will be deleted during the update process. Press “Update” to continue.



12. The Navitel Navigator Update Center will download and install automatically the selected version of the software.



13. Following that, the selected maps will be automatically downloaded and installed.



14. If there are other devices to update or maps to download, press “More updates”. Otherwise, press “Exit”.



15. Unplug the navigation device from the PC.

16. Run “Navitel Navigator”.



The Join Stock Company "CNT", 2007. All rights reserved.

The contents of this Guide, as well as any attached demo materials, are the sole proprietorship of the Join Stock Company "CNT". Any commercial usage of this Guide may be carried out only with written permission from the Join Stock Company "CNT". The information in this document shall not be changed without prior notice given to the Join Stock Company "CNT".